

Model Disability Survey

UN Sub-Regional Meeting on
Disability Measurement and Statistics in support of the 2030 Agenda for
Sustainable Development and the 2020 World Population and Housing
Census Programme

Almaty, Kazakhstan, 6-8 June 2017

Dr. Carla Sabariego

Disability and Rehabilitation Team

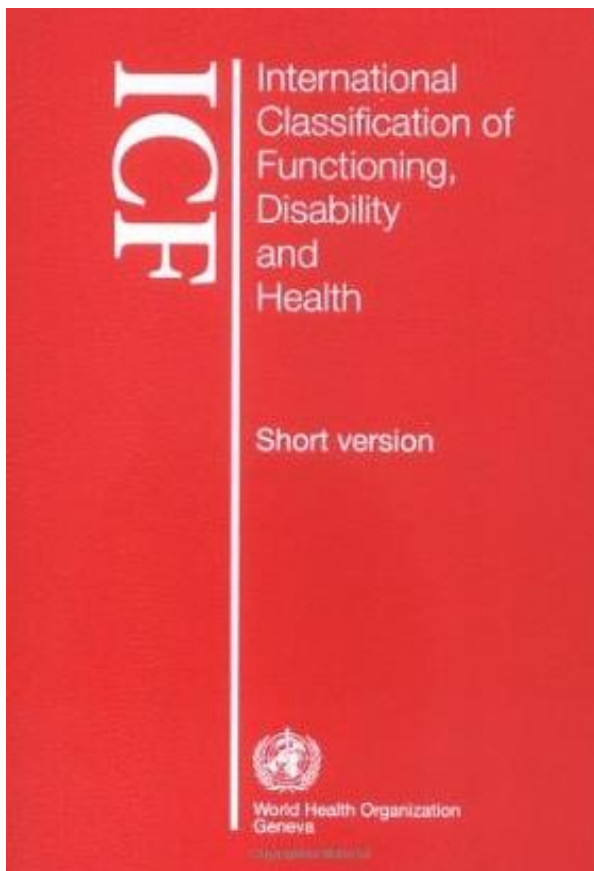
WHO Department of Violence and Injury Prevention and Disability

1. Conceptual basis

2. Measurement

3. Available versions

4. Implementations



International Classification of Functioning, Disability and Health

Disability (or functioning) as the outcome of the interaction between health conditions or impairments and environmental factors



Health Condition



FUNCTIONING/DISABILITY



Environmental Factors

Stroke



FUNCTIONING/DISABILITY

Memory
Fatigue
Sleep

Self-care
Mobility
Communication

Work
Social life
Relationships

Dimensions of functioning	Dimensions of disability
Body functions	Impairments
Activities	Activities limitations
Participation	Participation restrictions

Stroke



FUNCTIONING/DISABILITY

Memory
Fatigue
Sleep

Self-care
Mobility
Communication

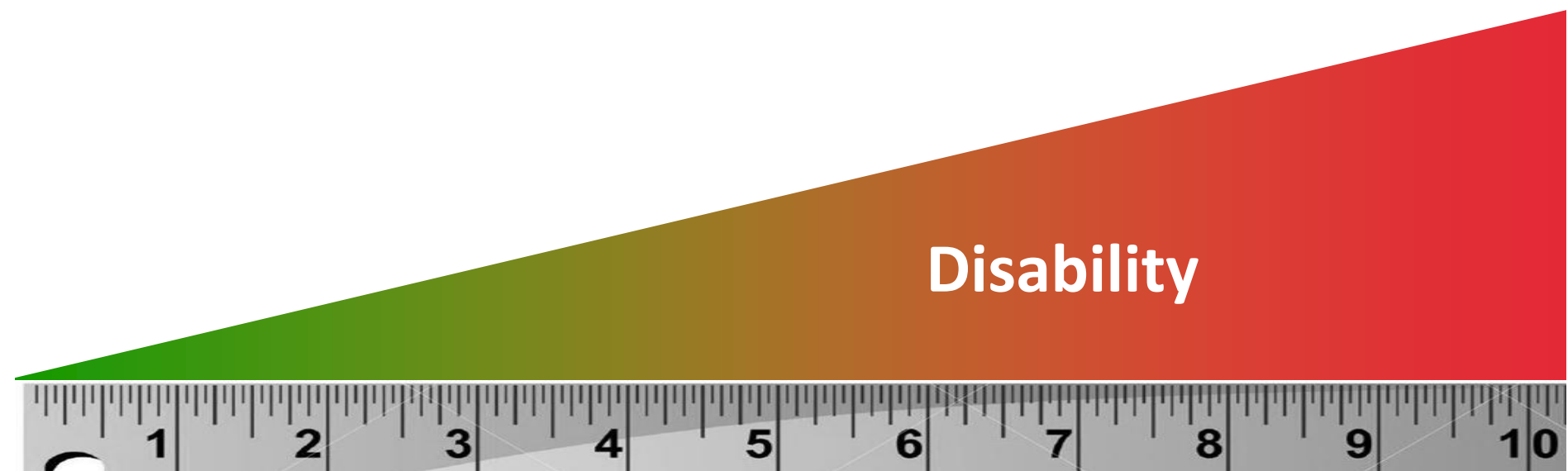
Work
Social life
Relationships



Environmental
Factors



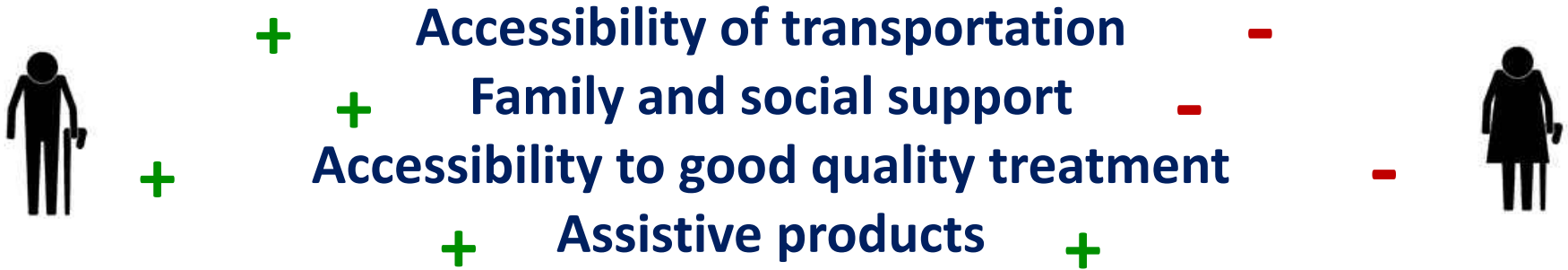
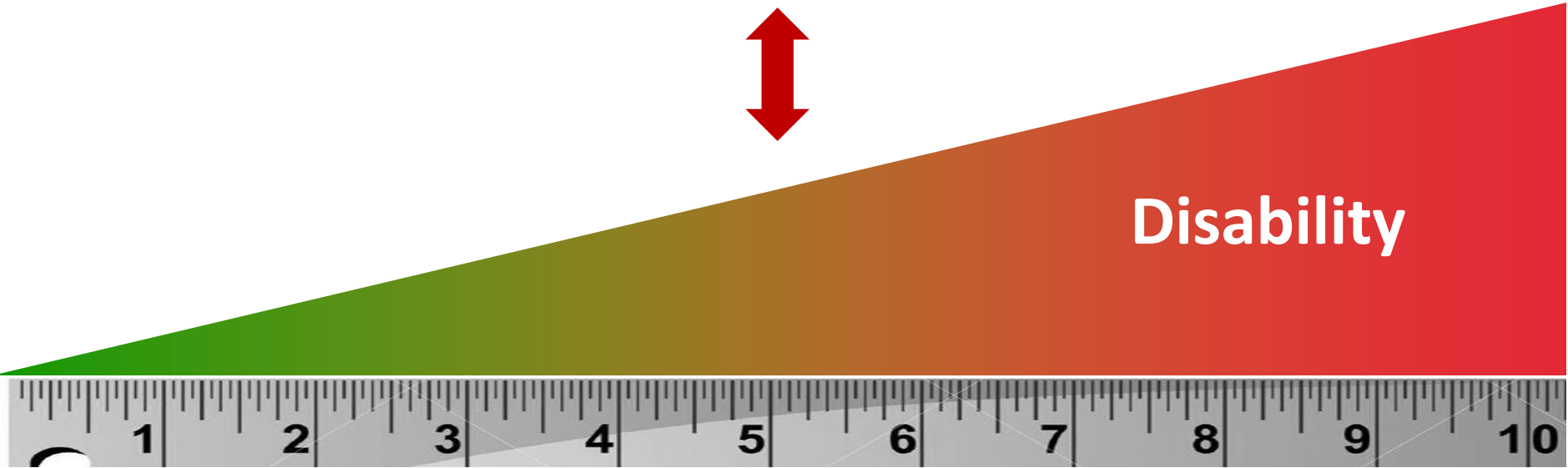
Disability as a continuum, ranging from low to high levels



Stroke



Disability



Stroke



Disability



- Accessibility of transportation** -
- Family and social support** -
- Accessibility to good quality treatment** +
- Assistive products** +

MDS goes beyond focusing on persons with physical or sensory impairments (e.g. blindness, deafness, lack of a limb)

- REPRESENTATIVE SAMPLE GENERAL POPULATION
- NO FILTERS ARE APPLIED



Disability



Number of persons

15%



Low

Disability

Extreme



1. Conceptual basis

2. Measurement

3. Available versions

4. Implementations

ICF Classification



MDS Measurement



How to operationalize disability for measurement purposes?

Key ICF Concepts

Capacity

Inherent or intrinsic feature of a person to do an action or execute a task
“under the skin”

Performance

Doing of an action or execution of a task in the actual context of the individual **“lived experience”**

Capacity



Intrinsic capacity of the
body

Performance



Result of the interaction of
capacity with the environment
and the person



Missing limb Health Condition



CAPACITY





Missing limb
Health Condition



PERFORMANCE=DISABILITY



Environmental
Factors



Section

3000

(A+B)

Environmental
factors

Section

4000

Performance

Section

5000

Health Conditions
&
Capacity

1. Conceptual basis

2. Measurement

3. Available versions

4. Implementations



	MDS Full version (2012)	MDS Brief version (2016)
Context	Stand alone survey national or regional implementations	Integration in health and further specific surveys
Time frame	Every 5 to 10 years	Flexible, continuous
Length	60 – 120 minutes	10-15 minutes
Number of modules	8	3 (core)

**MDS
Full
version**

**Section
3000
(A+B)
Environmental
factors**

**Section
4000
Performance**

**Section
5000
Health Conditions
&
Capacity**



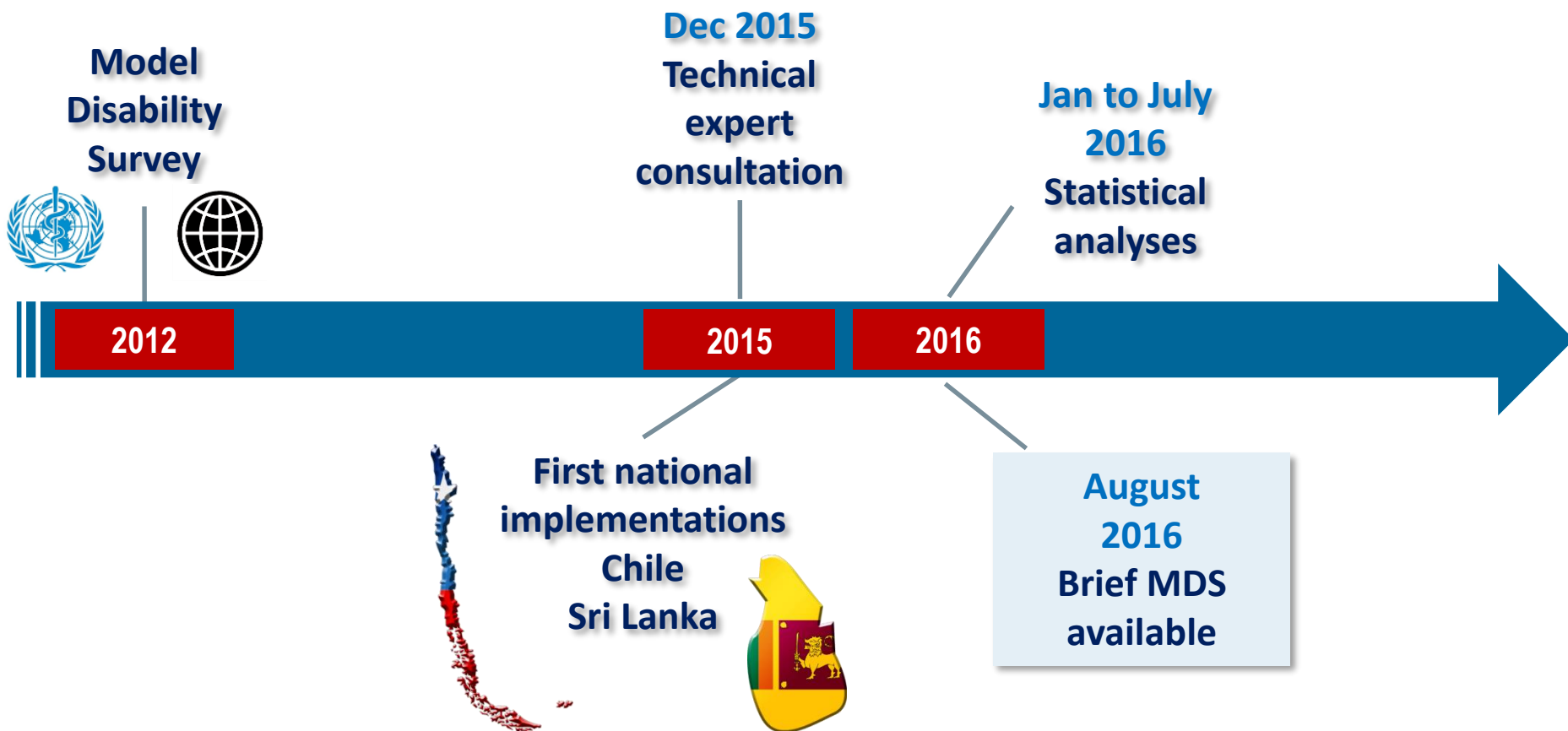
**Brief
MDS**

15 questions

12 questions

13 questions

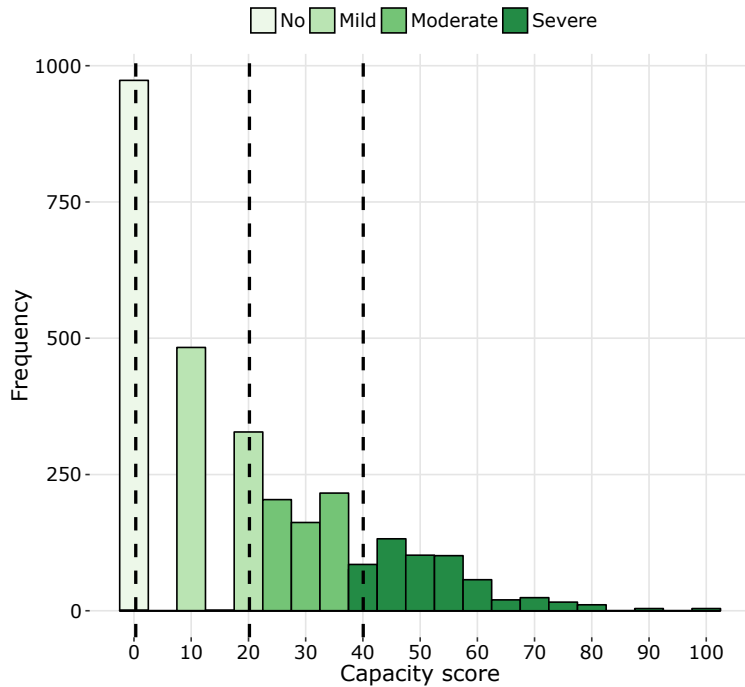
Development Brief MDS



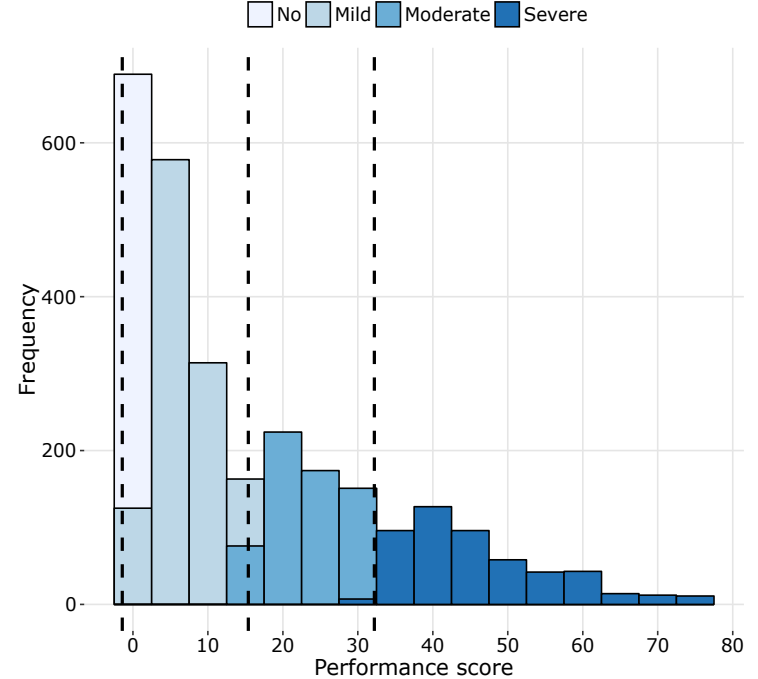
Goals Brief MDS

1. To estimate and monitor changes on the **continuum of disability**:
 - a. in the country through general population surveys, such as health surveys
 - b. for specific populations through specific surveys, such as labour force surveys

Capacity



Performance

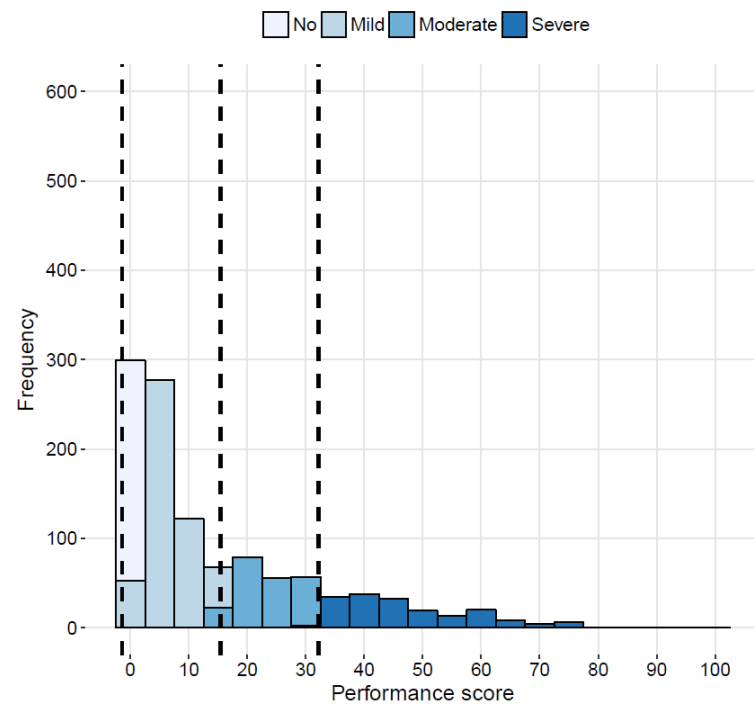
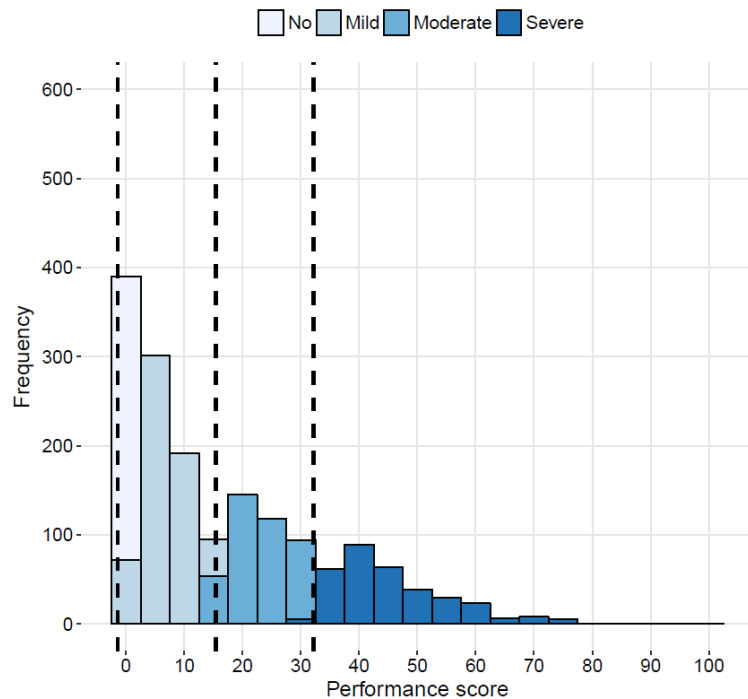


0
No
problems

100
Extreme
problems

Are levels of disability higher in women than in men?

Sri Lanka



0

No problems

100

Extreme problems

Goals Brief MDS

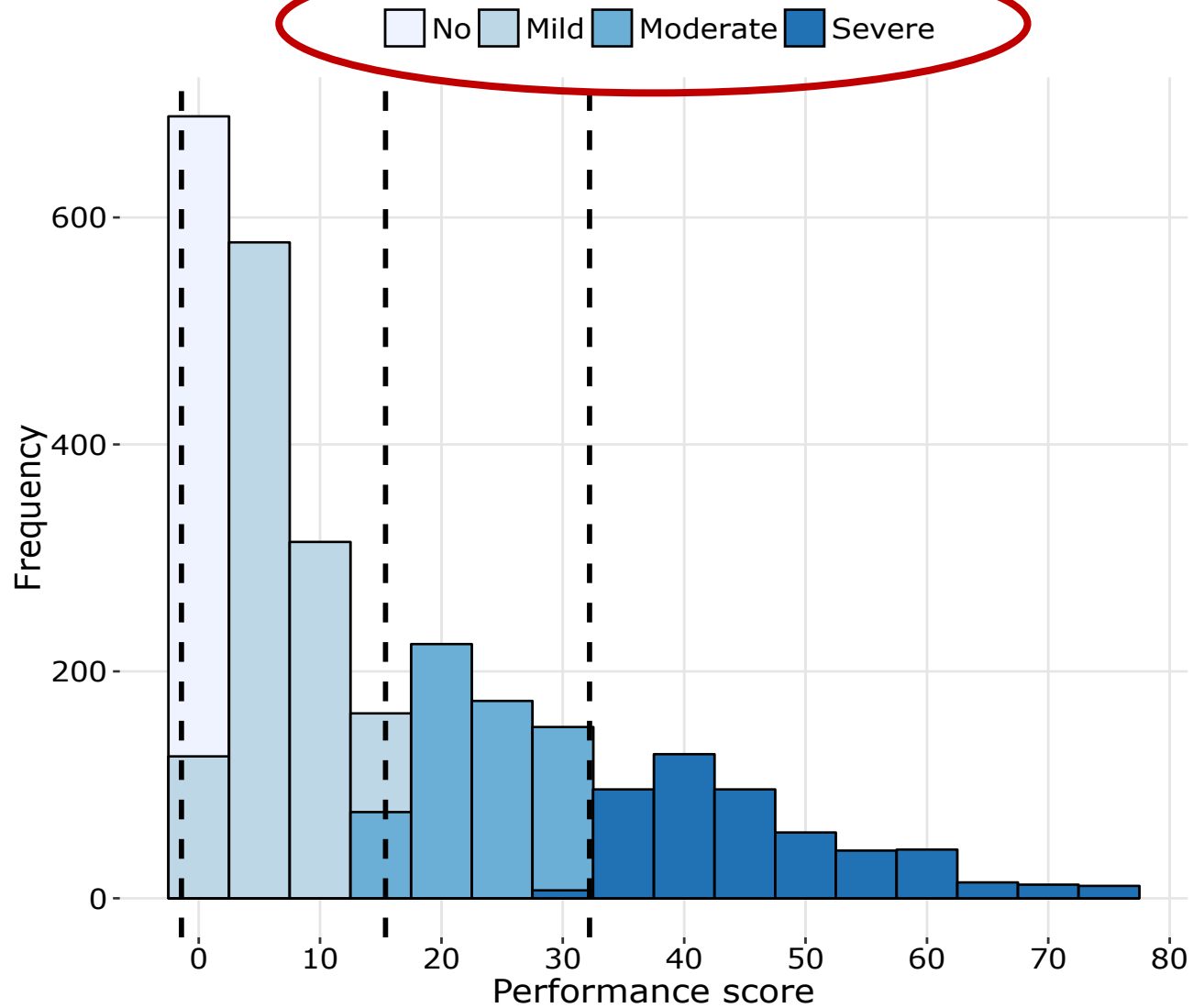
2. To define who experiences mild, moderate or severe disability for **disaggregation purposes**

SUSTAINABLE DEVELOPMENT GOALS



CONVENTION on the RIGHTS of
PERSONS with DISABILITIES

Performance

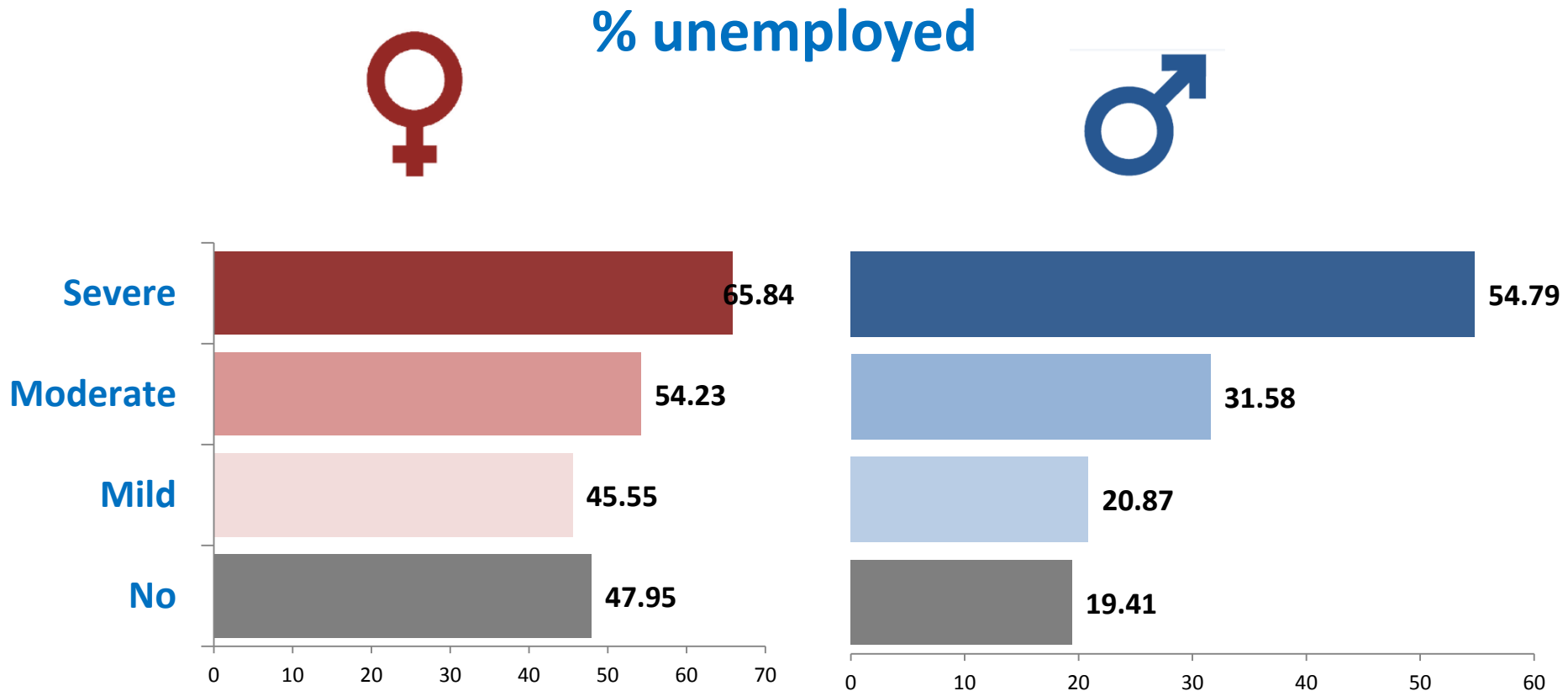


GOAL 8

Chile

Indicator 8.5.2: Unemployment rate, by sex, age and persons with disabilities

SUSTAINABLE DEVELOPMENT GOALS

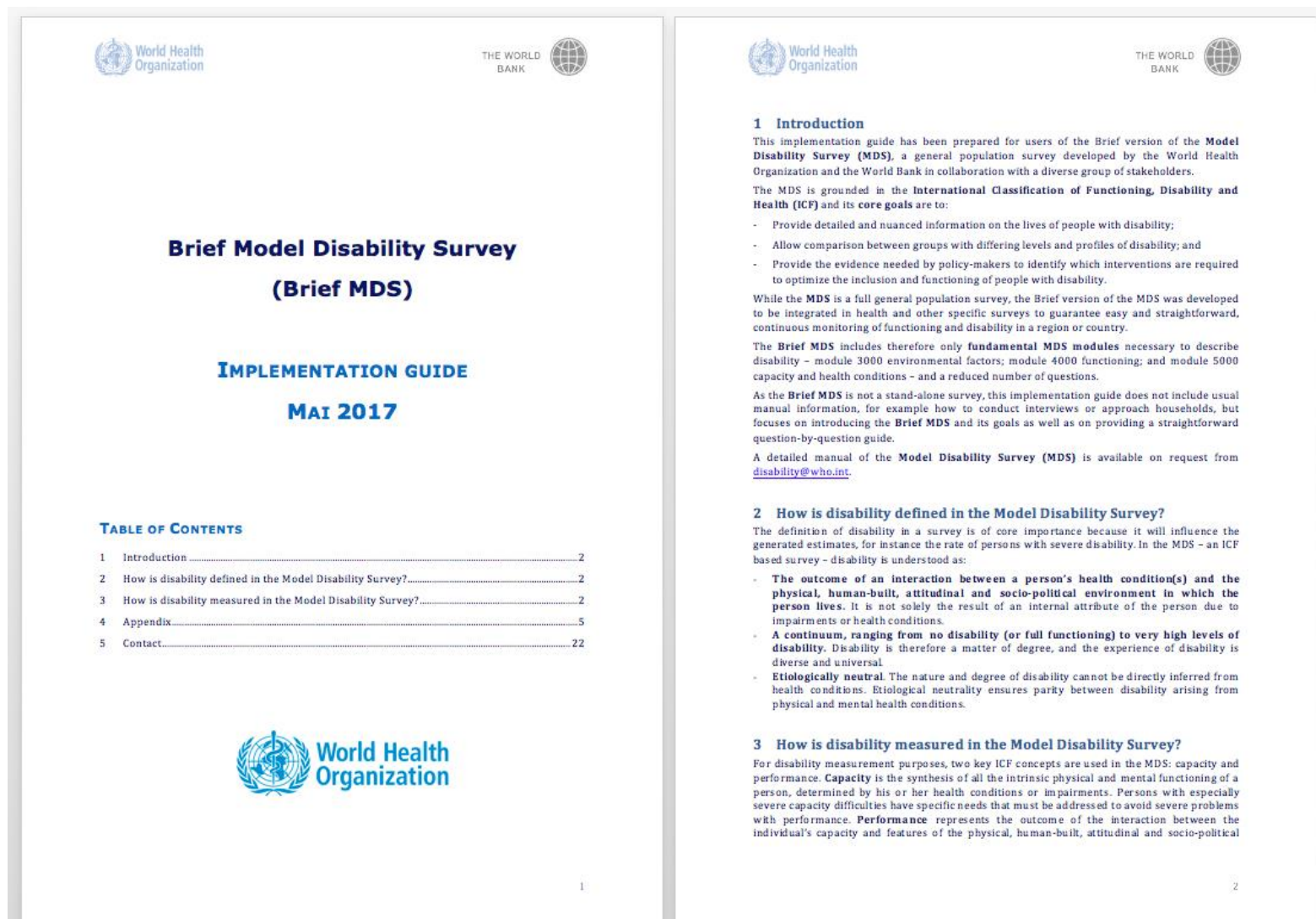


Goals Brief MDS

3. To deliver **basic** information on features of **environmental barriers** and **needs** associated with different levels of disability.

- Hindering aspects of the general environment (4 questions)
- Family and social support (3 questions)
- Attitudes of others (2 questions)
- Use and need of personal assistance (3 questions)
- Use and need of assistive devices (3 questions)

Implementation Guide*



* Available on request from leel@who.int

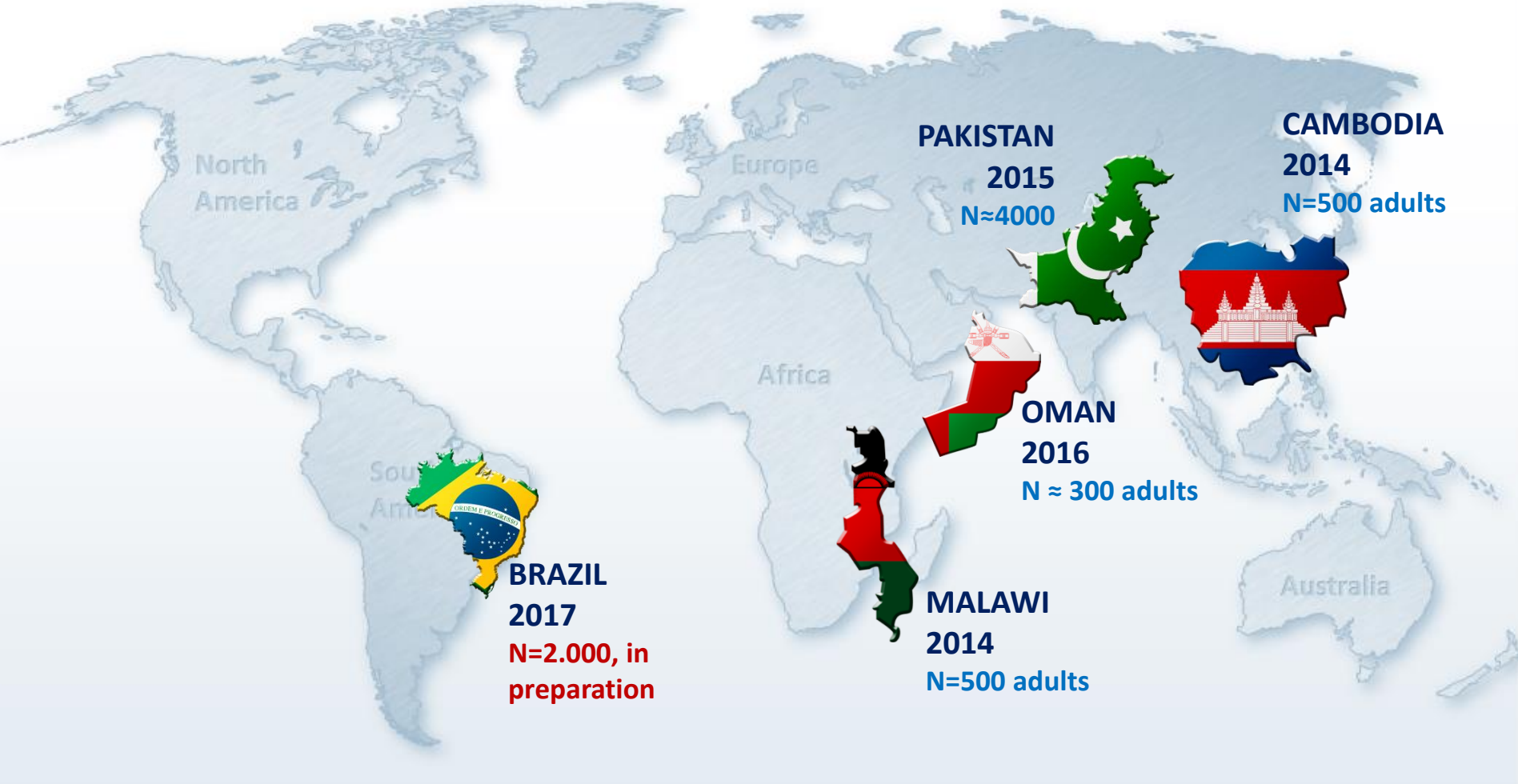
1. Conceptual basis

2. Measurement

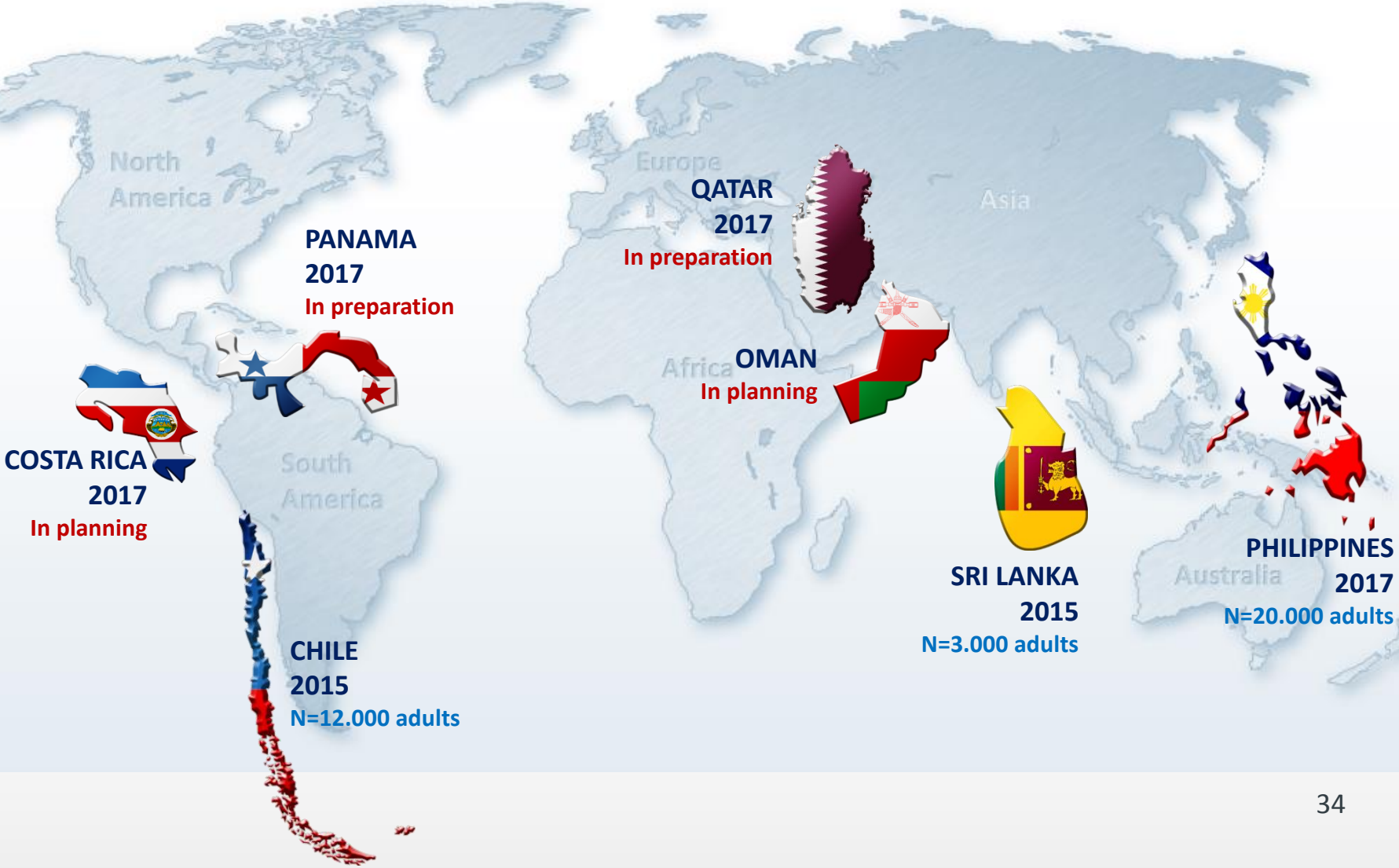
3. Available versions

4. Implementations

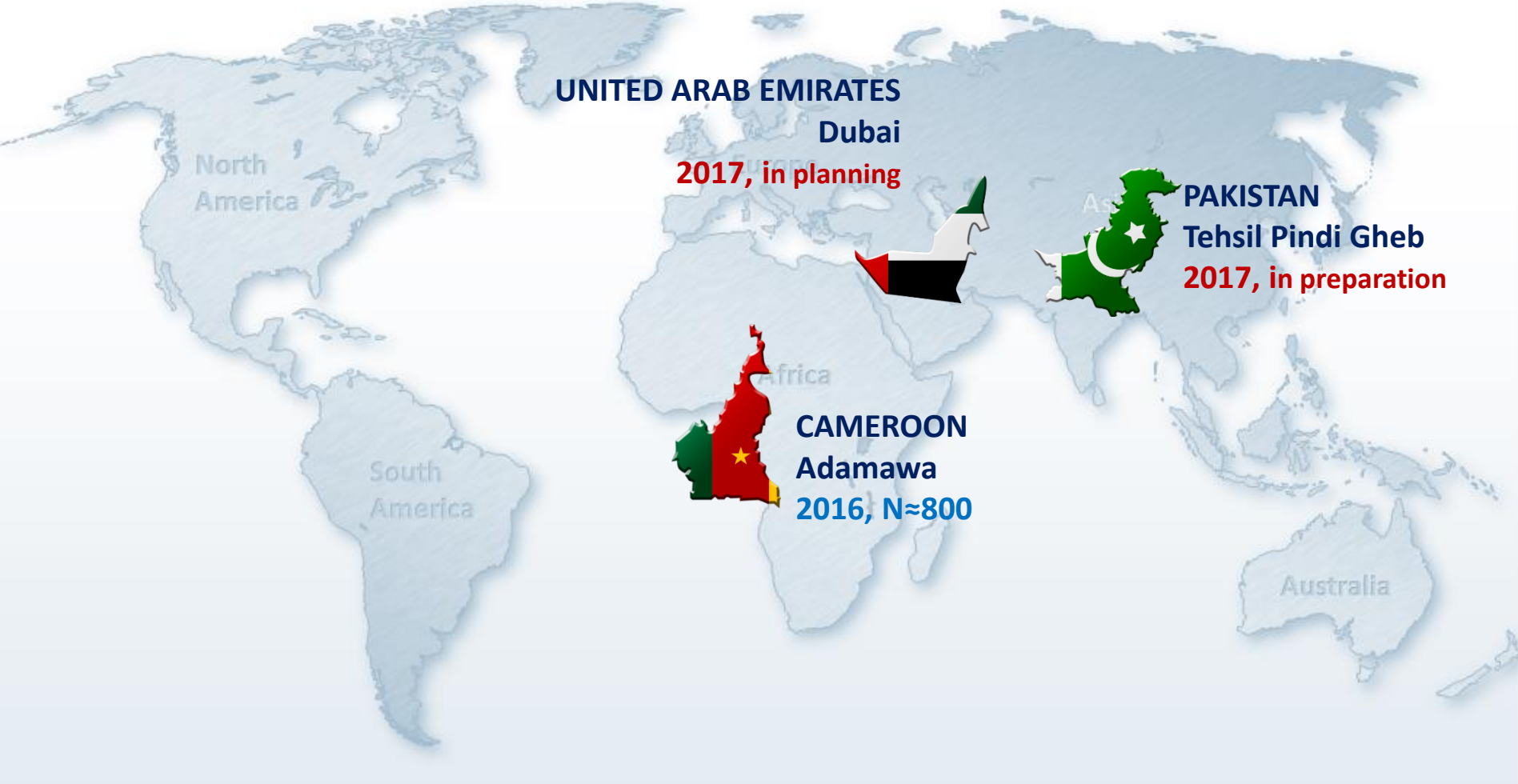
PILOT STUDIES



NATIONAL SURVEYS



REGIONAL SURVEYS



**Any
questions?**

**Thank you
for your attention**

Long and brief MDS available at:

<http://www.who.int/disabilities/data/mds/en/>